

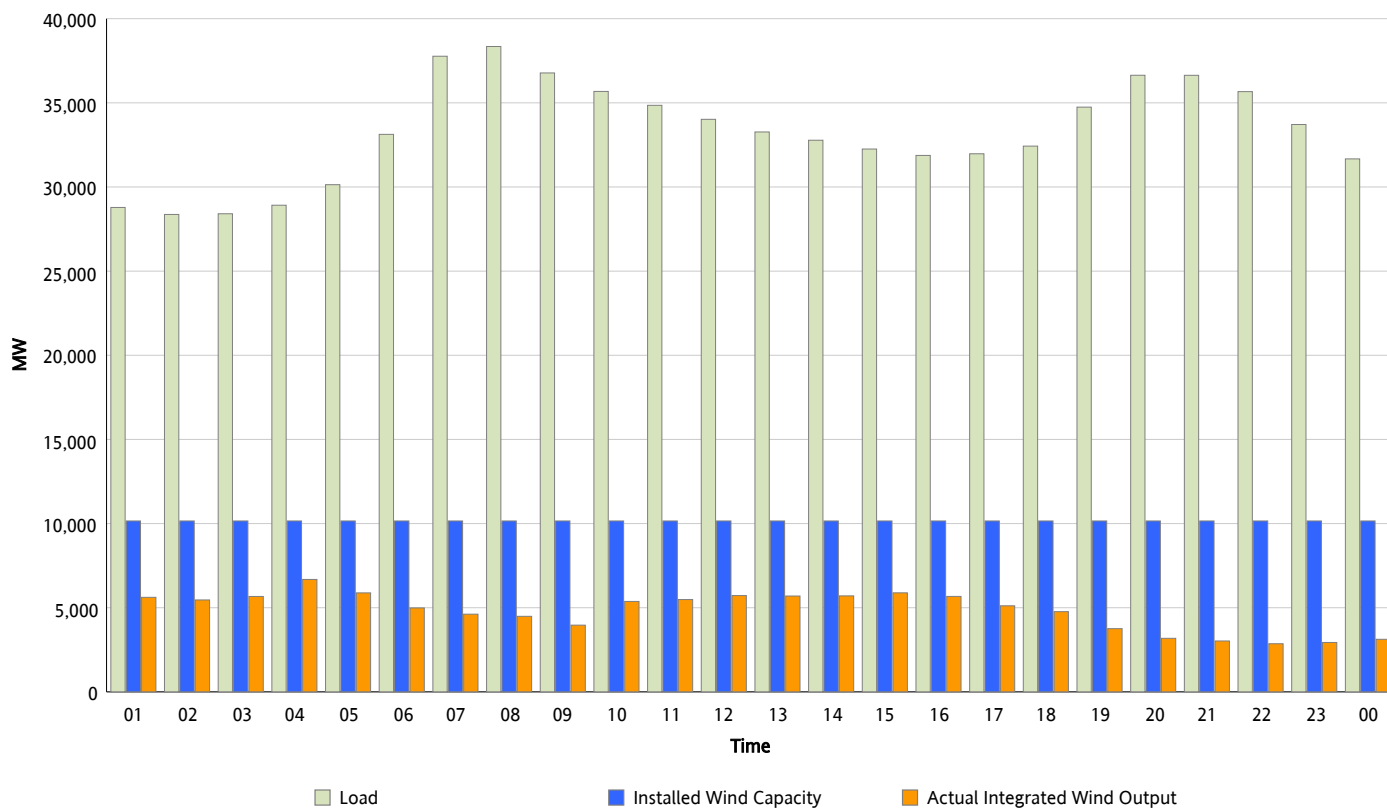


ERCOT Grid Operations

Wind Integration Report : 02/27/2013

Peak Load	38,346 MW
Load Peak Hour (HE)	08
Wind Over Peak	4,489 MW
Wind Record 02/09/13	9,481 MW
Max Wind Value*	6,867 MW
Wind Peak Time	03:45
Wind Integration %	23.61 %

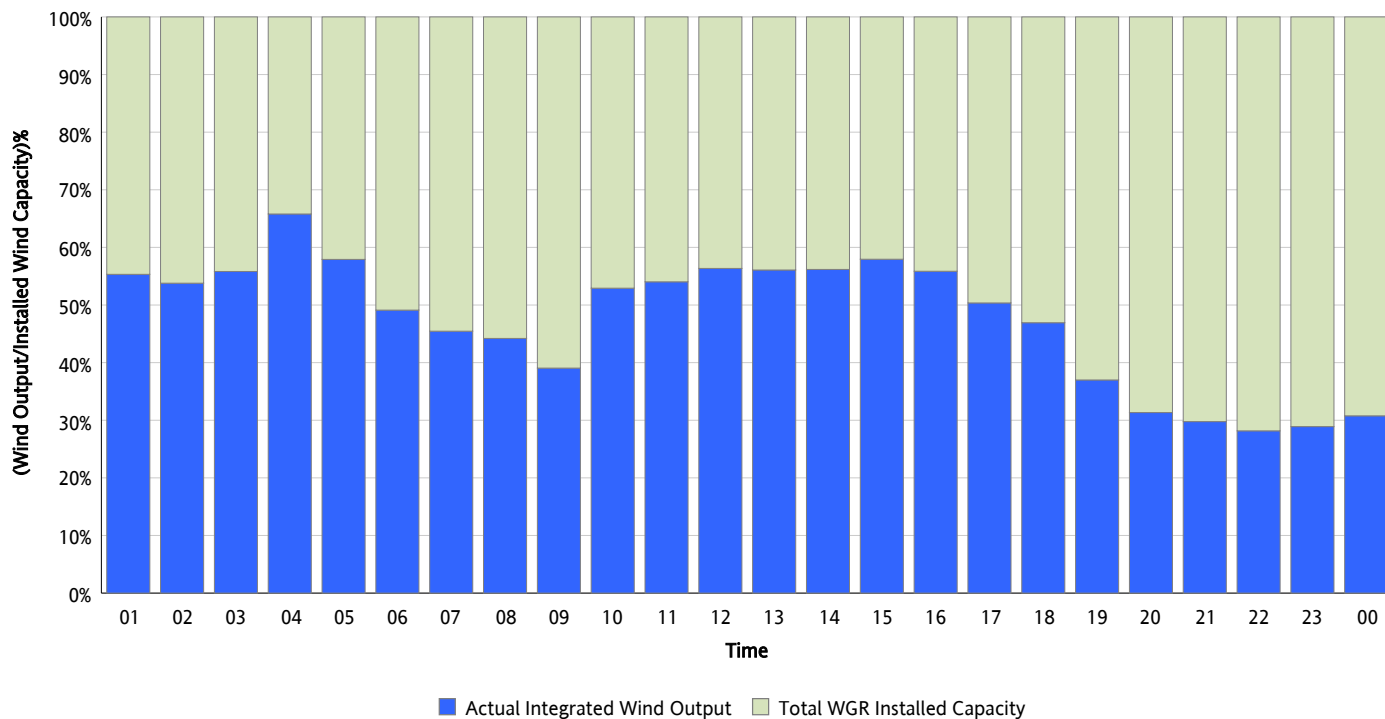
Hourly Average Actual Load vs. Actual Wind Output
02/27/2013



* Wind Record and Wind Max represent instantaneous values and the rest of the values are integrated over the hour

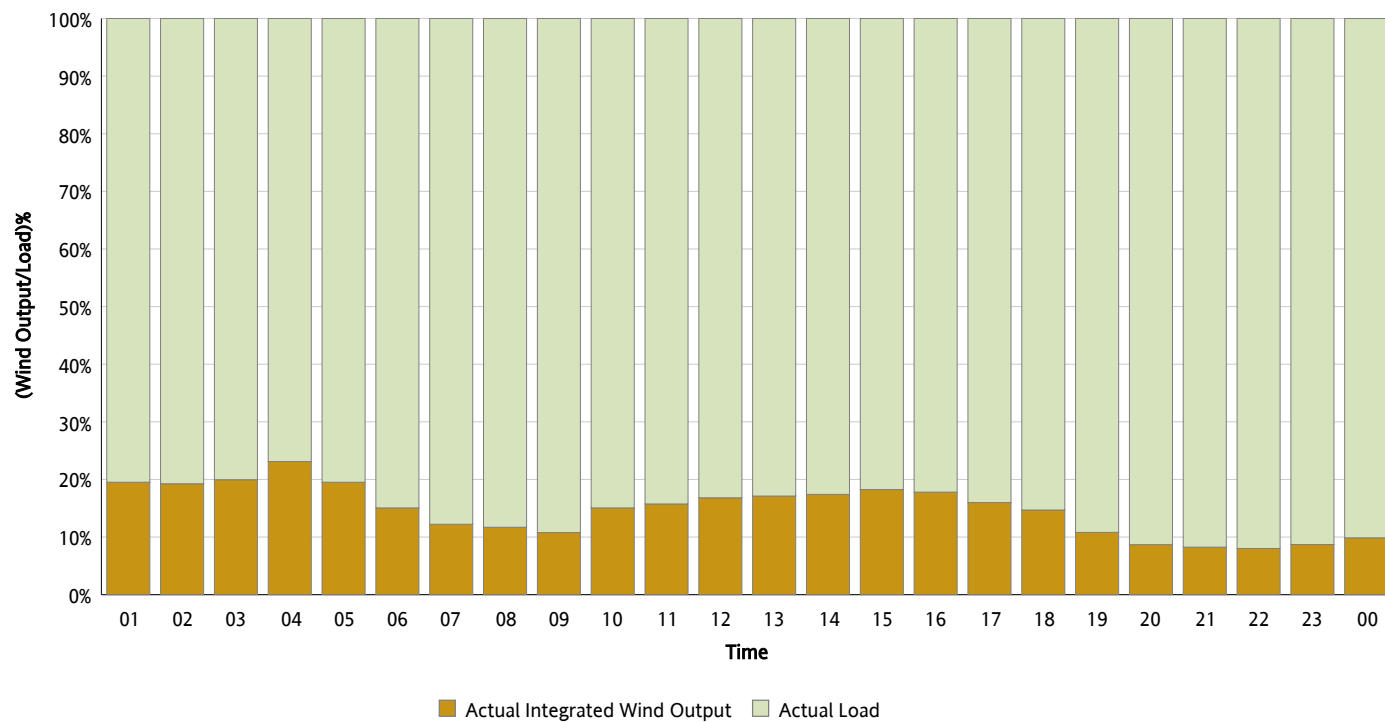
Actual Wind Output as a Percentage of the Total Installed Wind Capacity

02/27/2013



Actual Wind Output as a Percentage of the ERCOT Load

02/27/2013



ERCOT Load vs. Actual Wind Output

02/20/2013 - 02/27/2013

